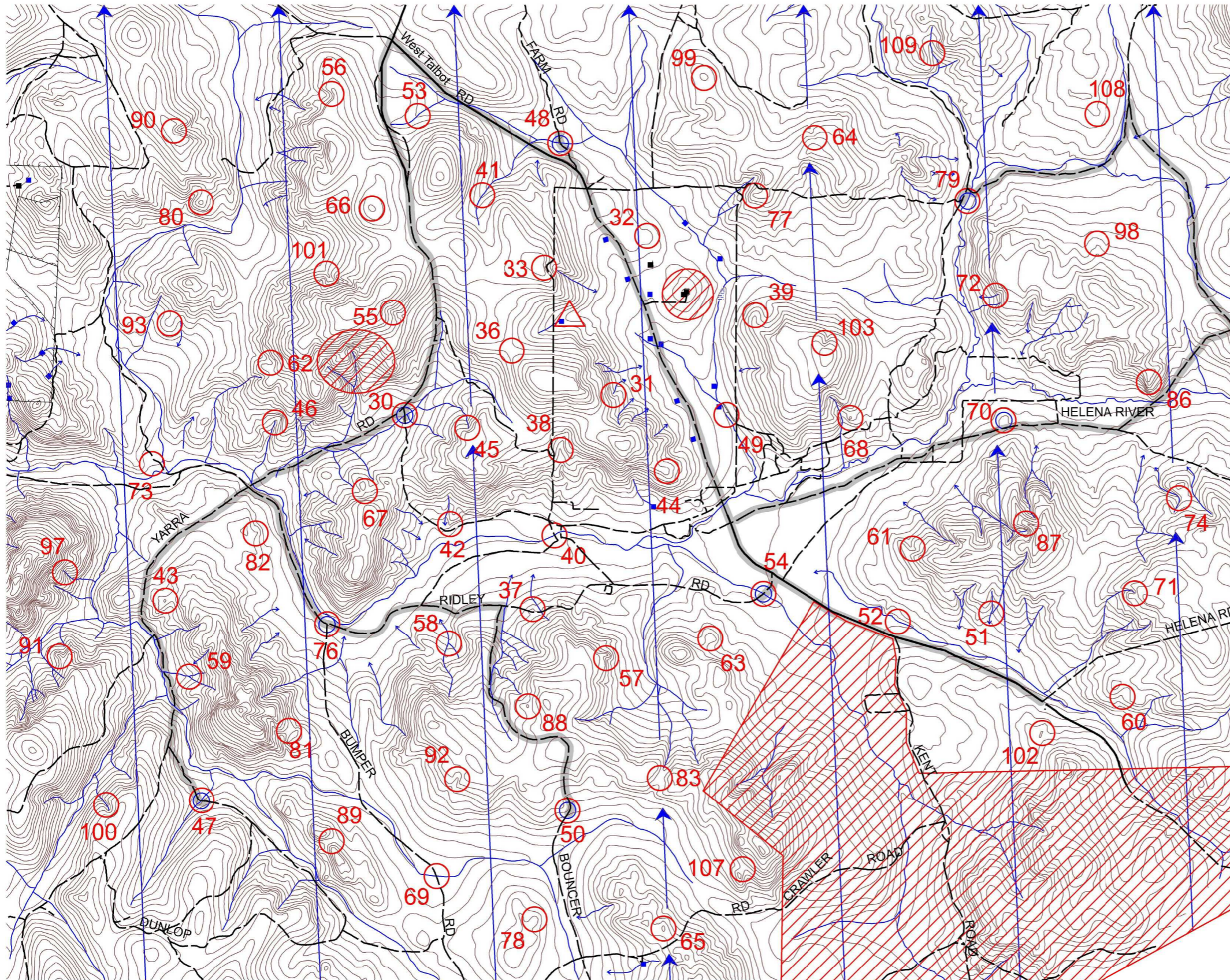


The Carrolless Rogaine

WARA Autumn 12 Hour Rogaine - 1st May 2010

2010 Paddy Pallin Junior Cadet Challenge



LEGEND

SCALE 1:50,000, 5 metre contour interval
 0 1km 2km 3km

- Building
- Control
- Contours
- Dams
- Hash House
- Magnetic North Line
- Out of Bounds
- Patrolled Road
- Pipeline
- Railway, Abandoned
- Road, Bitumen
- Road, Major Gravel
- Road, Minor Gravel
- Watercourse
- Water Drop

SETTERS AND VETTERS

Stephen Brown Jim Klinge
 Jim Langford Keith Stewart

SPECIAL THANKS TO THE FARMERS

Clive and Steven Owen for access to their farm and the use of the Hash House site



Department of Sport and Recreation



This map was produced using OCAD 9 by the Western Australian Rogaining Association, wa.rogaine.asn.au. Data supplied by Landgate and used under copy licence 393/93. Possession of this map does not give right of entry to this area.

WARA Autumn 12 Hour Rogaine -The Carrollless Rogaine - 1st May 2010

No	Description
30	The watercourse track intersection
31	The watercourse
32	The spur
33	The gully, head of
36	The saddle
37	A knoll
38	A watercourse junction
39	The spur
40	The watercourse and western track intersection
41	The gully, broad
42	The spur
43	The knoll
44	The spur
45	The watercourse, head of
46	An intersection of 3 gullies
47	The watercourse track intersection
48	The watercourse track intersection
49	The watercourse
50	The spur
51	The watercourse junction
52	The watercourse
53	The watercourse, broad
54	The watercourse track intersection
55	The gully
56	The head of the gully, north side
57	A watercourse
58	The watercourse junction
59	The watercourse junction
60	The gully, edge of a rock surface
61	A watercourse
62	The gully
63	A knoll
64	The gully
65	The knoll
66	The knoll

Water Drops: At Controls 30, 47, 48, 50, 54, 70, 76, 79

Patrolled Roads: See roads indicated on the map.

No	Description
67	The saddle
68	The knoll, rocky
69	The watercourse track intersection
70	The spur
71	The watercourse, head of
72	The northern watercourse
73	A watercourse (with running water) east side
74	A watercourse junction
76	The track junction, 40m at 0 degrees
77	The spur, rocky
78	The spur
79	The watercourse
80	The knoll
81	The saddle, next to a 2.5m high rocky outcrop
82	The spur
83	The saddle
86	The spur
87	The spur, rocky
88	The knoll
89	The saddle
90	The gully, head of
91	A knoll, rocky
92	The gully
93	The spur
97	The watercourse, steep upper part
98	The spur
99	The knoll, broad
100	The watercourse
101	The gully
102	The knoll
103	The gully, head of
107	The saddle
108	The spur
109	The watercourse

If you are injured please make your way to a water drop or a patrolled road and wait there for help.

Control values - All thirty numbers are worth 30 points, all forty numbers are worth 40 points, etc

Important Information
Issue of maps From 7:00am Saturday
Control Cards From 9:30am Saturday
Briefing 9:45am Saturday
Start 10:00am Saturday
Finish 10:00pm Saturday
Hash House From 4:00pm
Sunset 5:37pm
Moon rise 7:37pm
Late penalty 10 points per minute or part minute No points if 30 minutes late
Controls used 69 Total points 4340
Points will be gained for mis-punches only if you inform administration of the mistake immediately upon your return. If you have not queried your controls-visited with administration within 30 minutes of the close of the event then your score will be finalized.